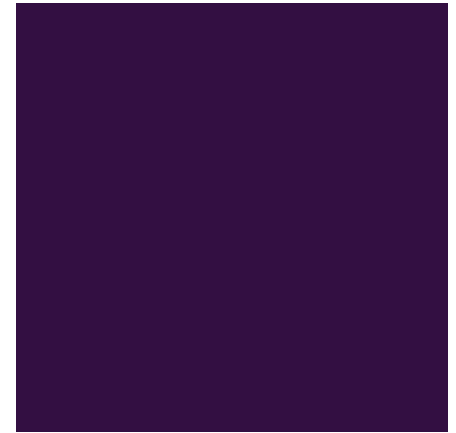
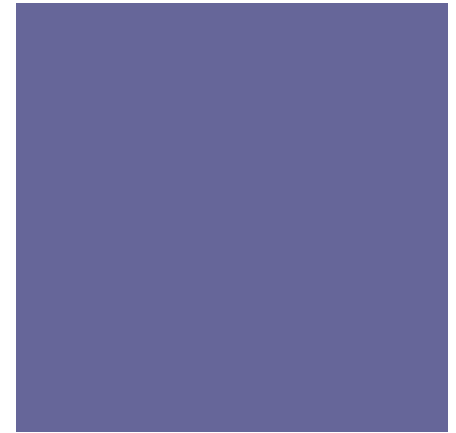


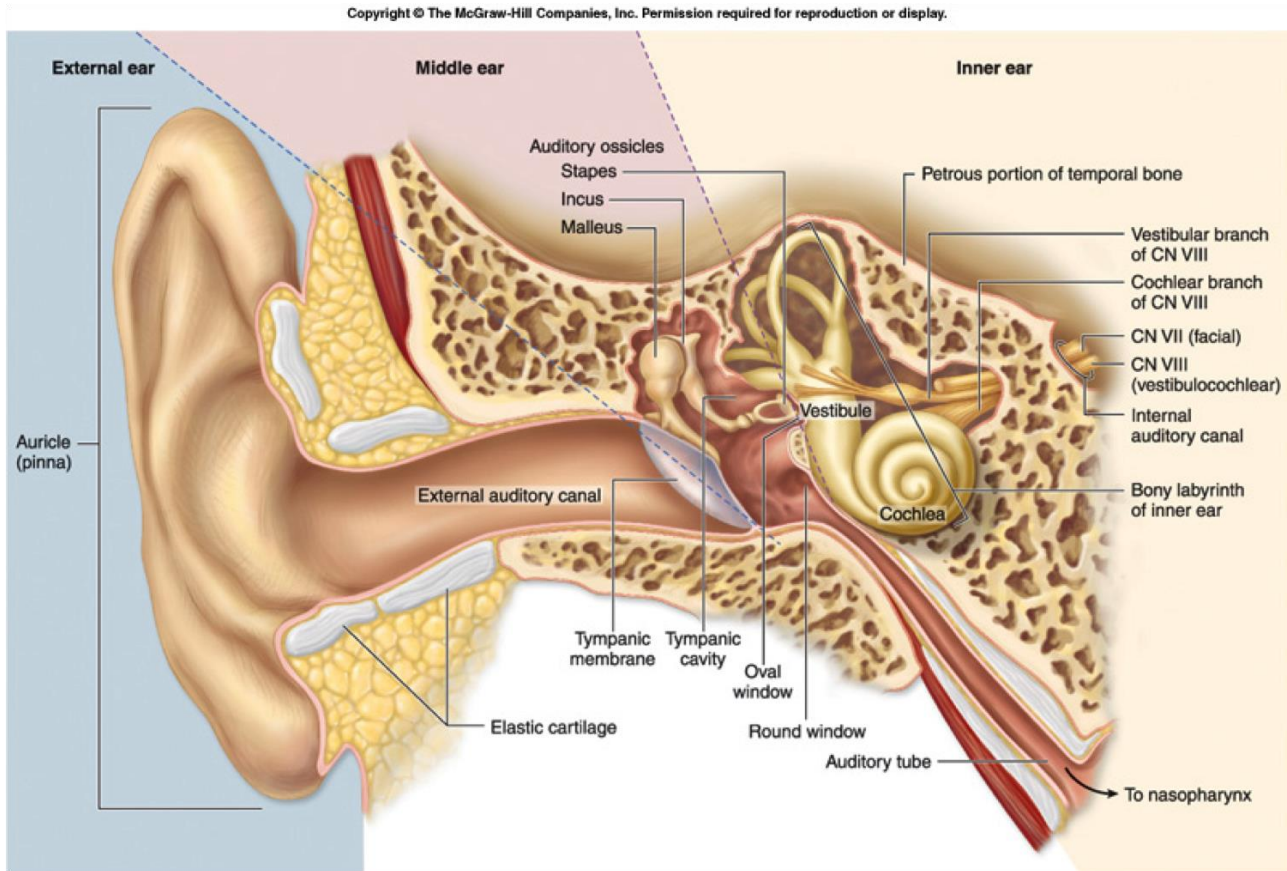


Early Identification



Hearing Loss Identification &
Rehabilitation

+ How we hear



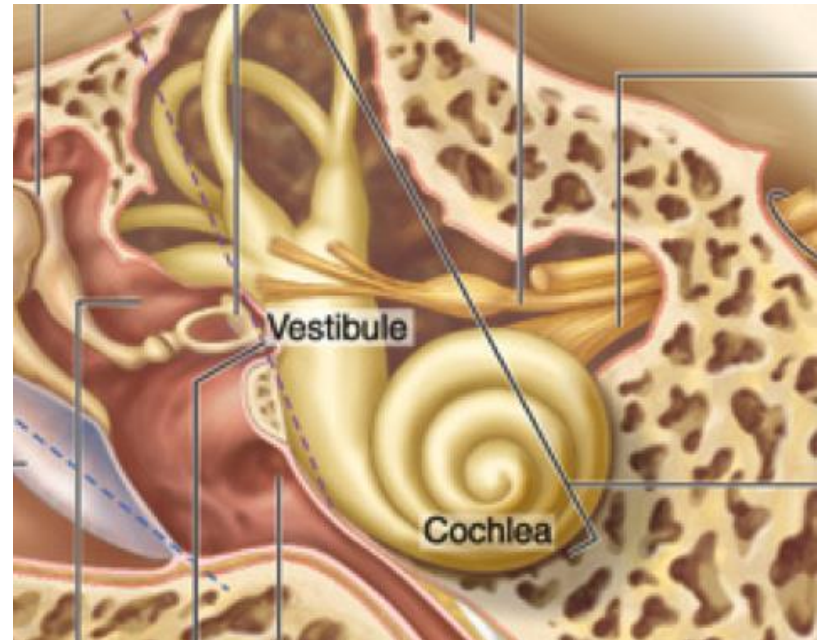
+ Conductive Hearing Loss

- Atresia
- Impacted cerumen
- Foreign Object in the ear
- Tympanic Membrane Perforation
- Middle Ear Effusion
- Head Trauma



+ Sensorineural Hearing Loss SNHL

- Genetics/Family History
- Risk Factors
- Aging
- Noise Exposure
- Head Trauma
- Ototoxicity
 - Antibiotics (gentamicin)
 - Chemotherapy treatments (cisplatin)
 - Poisons (mercury & lead)





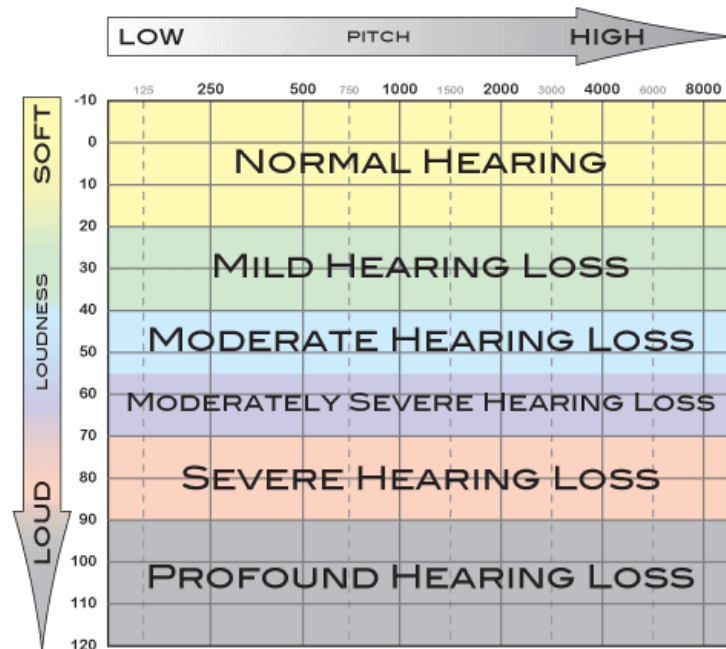
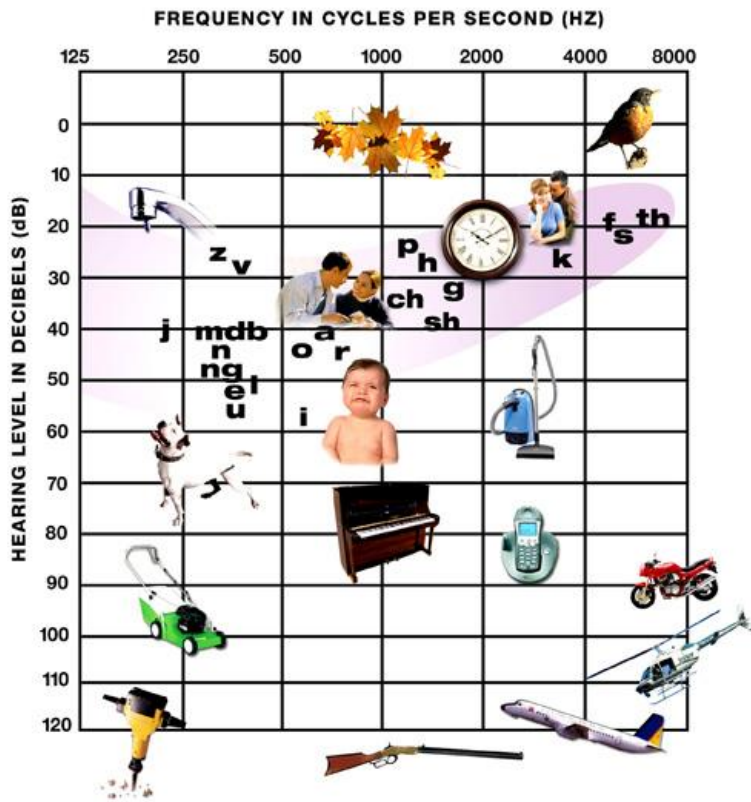
Five Risk Factors

Hearing loss can develop or worsen later in infancy and childhood.

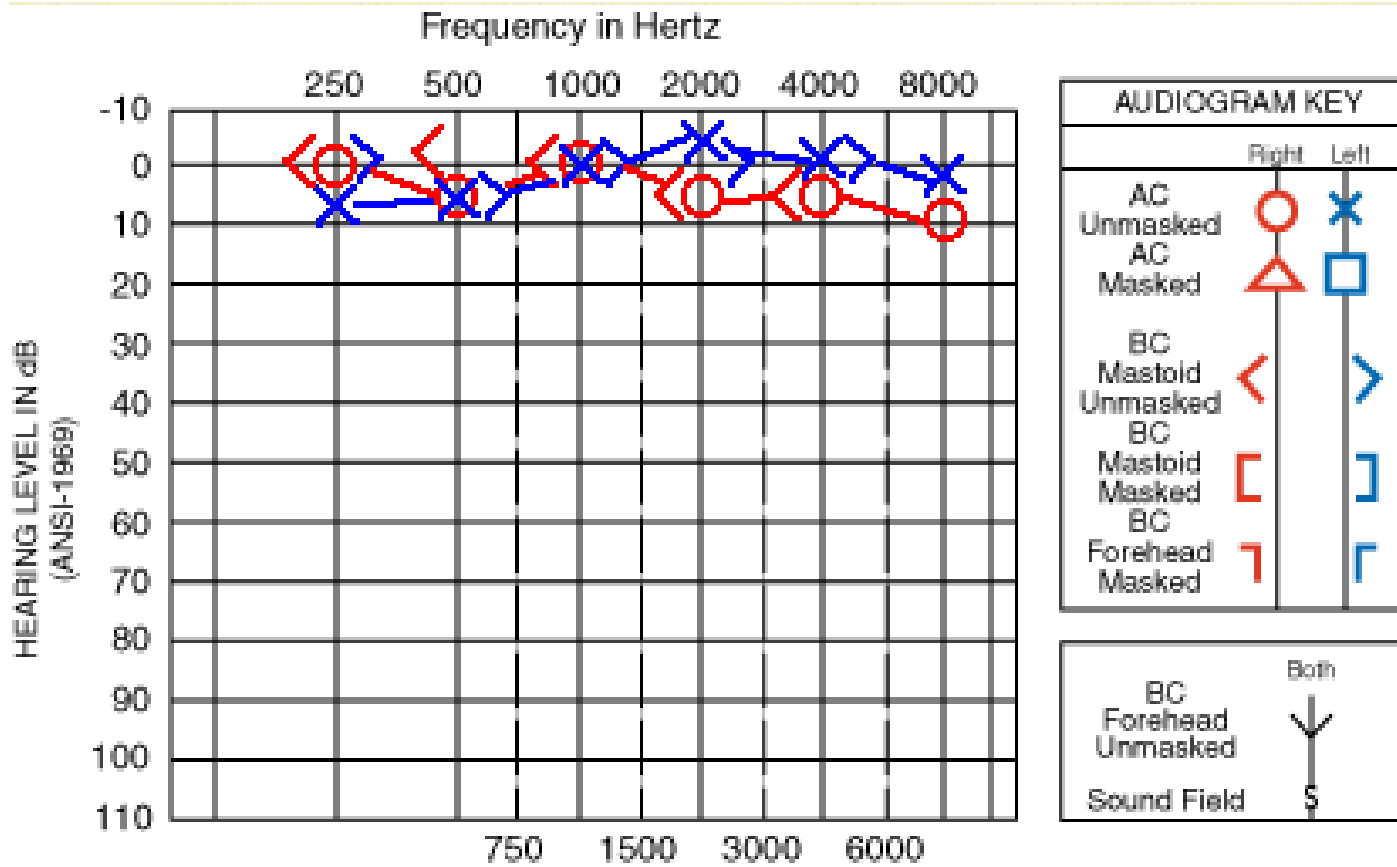
Recommend Diagnostic Evaluation by 6 months for infants who pass newborn screen

- Family history of Congenital hearing loss
- Congenital Perinatal Infection (rubella, CMV, etc)
- Birth Weight Less than 1500 grams
- Ototoxic medication (Gentamycin, Tobramycin, Furosemide/Lasix)
- Head and Neck Deformity
- Hyperbilirubinemia with blood exchange
- Meningitis
- Mechanical Ventilation
- Asphyxia/Anoxia
- In NICU more than 5 days
- Syndrome (CHARGE, Down Syndrome, etc.)
- Head trauma, familial concern, chemotherapy, etc.)

+ Audiogram



+ Normal Hearing



+ Behavioral Test Procedures

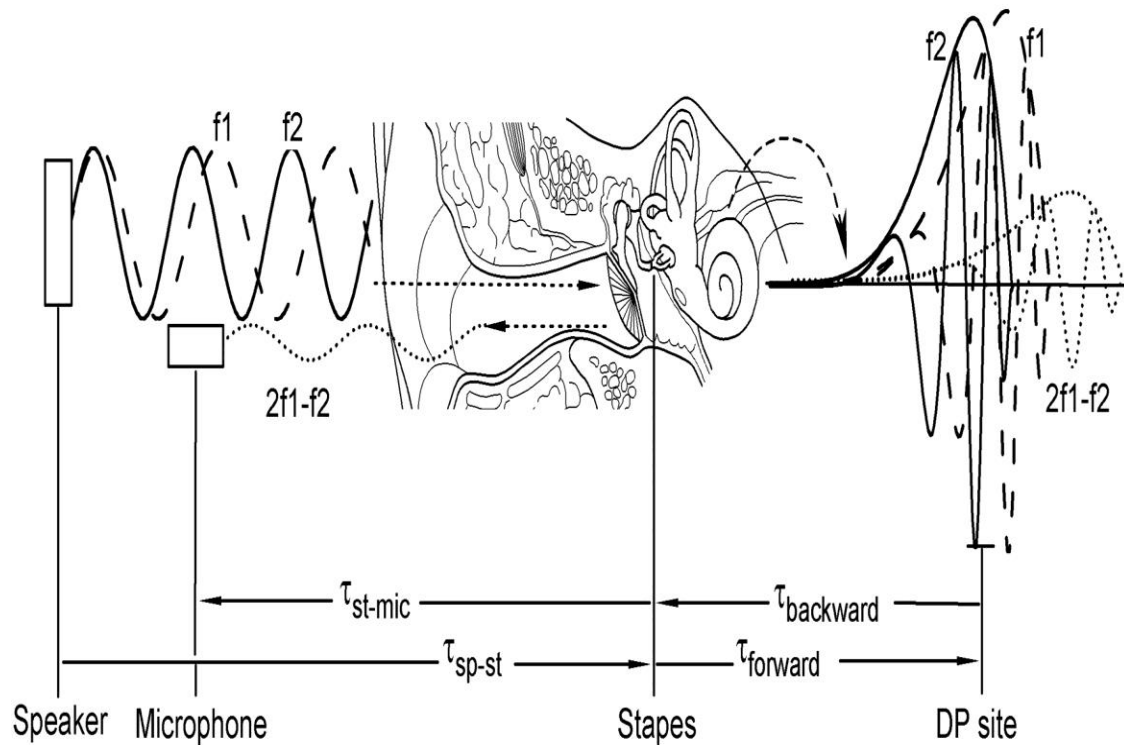


+ Physiological Test Procedures

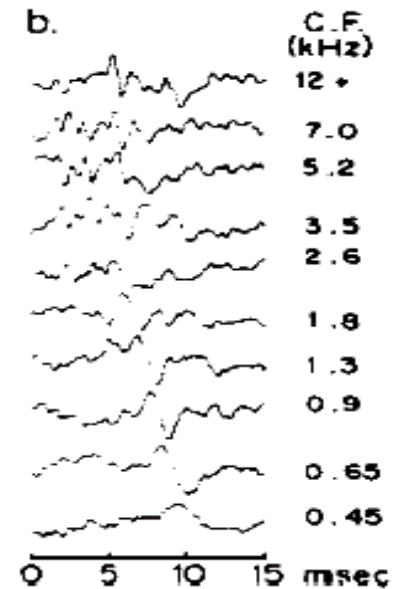
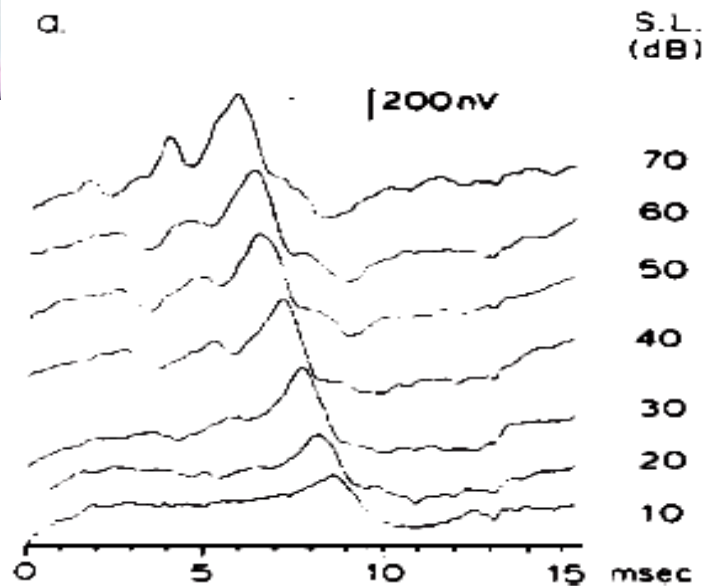
OAEs and ABR



+ Otoacoustic Emissions



+ ABR: Auditory Brainstem Response



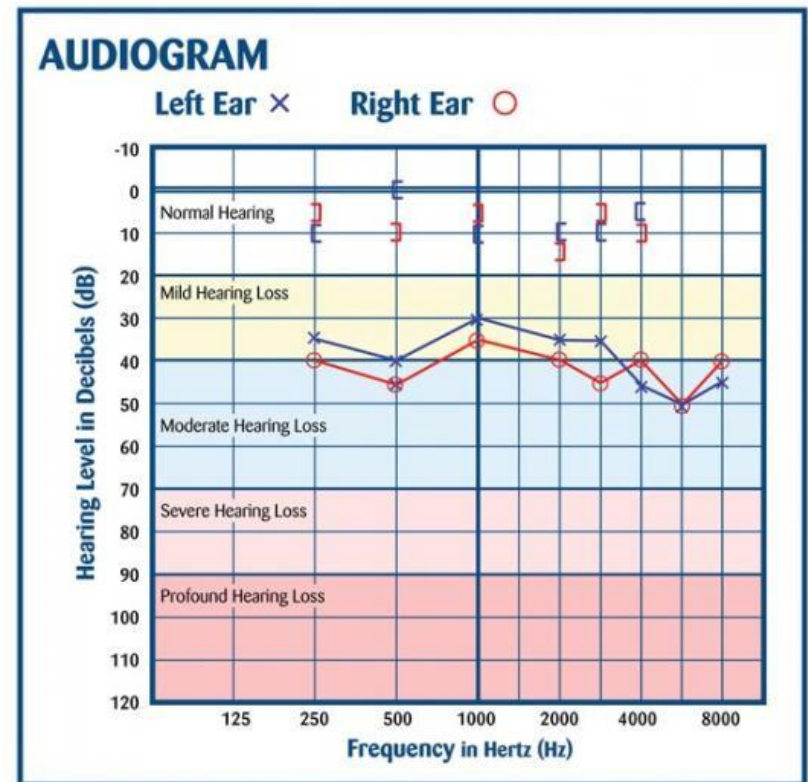
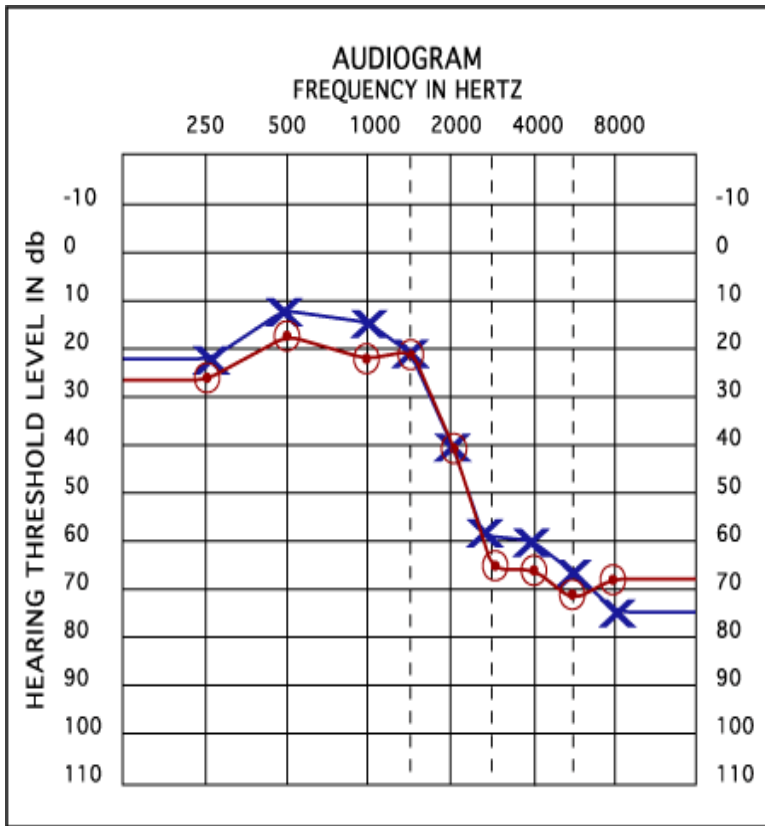


Diagnostic ABR

Baby must be asleep for at least 20 minutes

- 2 hour Appointments
- Unsedated Evaluation
- Families are provided with Verbal and Written Information on:
 - What to Expect
 - How to Prepare for ABR
- Most appropriate for children under 6 months of age
- Can be considered for child with significant developmental delays
- Behavioral Testing procedures for children 6 months and older
- Currently provided Once Monthly, testing only 3 Babies.

+ But my baby can hear!



* An air-bone gap that could be a sign of ear infection, that could be treated through the use of antibiotics.



Screening by 1 month

Diagnosis by 3 months

Early Intervention by 6 months



1 - 3 - 6

National EHDI Goals

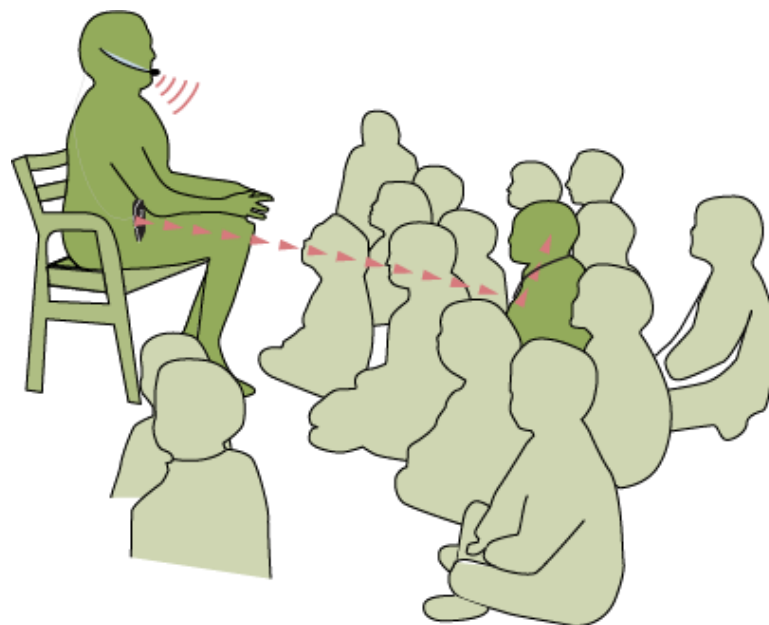
+ This is our goal!



+ Hearing Aid Styles: BTE/RIC/ITC/CIC



+ Improving the Signal from a Distance



+ Bluetooth Connectivity Remote Control & Microphone





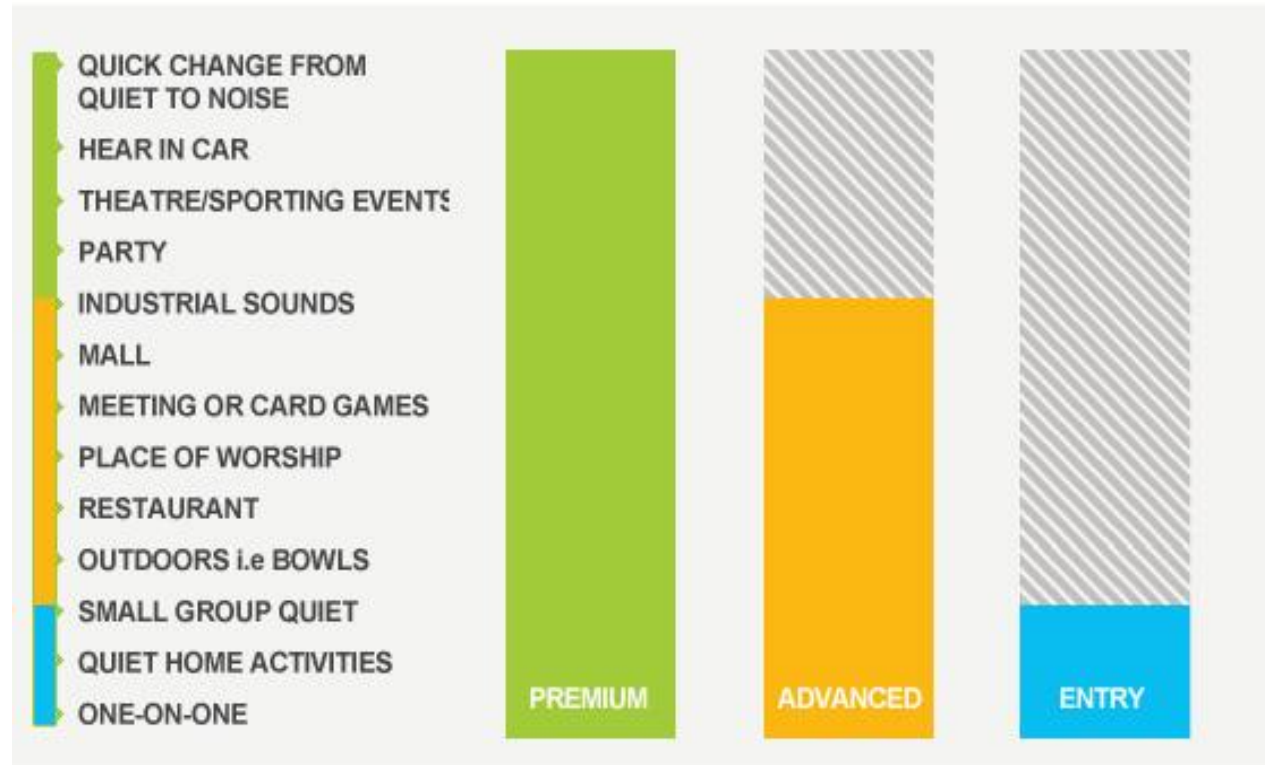
Introducing The **Made for iPhone**[®] Hearing Aid.

Stay Connected.

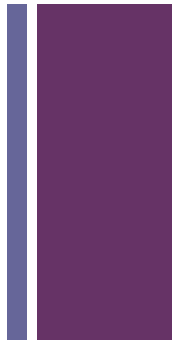


+ Matching Technology to Lifestyle

Louder - Harder Listening situations



Quiet - Easy Listening situations





Copyright 2001 by Randy Glasbergen. www.glasbergen.com



“It’s a special hearing aid. It filters out criticism and amplifies compliments.”